

※ Ratings: 450KW~2660KW, Voltages: 120V~6600V, Frequency: 60/50Hz, Revolution: 1800/1500 Rpm, Power Factor: 0.8

GENERATOR SET					Cummins ENGINE					GEN SET PHYSICAL DATA					
MODEL	STANDBY		PRIME		MODEL	STANDBY		PRIME		FUEL CON-SUMPTION (L/H)(PRIME)	BORE & STROKE (mm)	NO.OF CYLINDER	DIMEMSION L×W×H(mm)	WEIGHT	PADSIZE L×W(mm)
	(KW)		(KW)			(HP)		(HP)							
	50Hz	60Hz	50Hz	60Hz		50Hz	60Hz	50Hz	60Hz						
DJG-450C	400	450	364	410	QSX15G8/G9	670	755	595	680	103	137x169	I-6	3500×1300×2000	4450	4000×1800
DJG-500C	440	500	400	455	QSX15G8/G9	670	755	595	680	103	137x169	I-6	3500×1300×2000	4600	4000×1800
DJG-600C	565	600	512	545	VTA28G5	825	900	750	815	173	140×165	V-12	4100×1500×2000	6050	4400×2000
DJG-750C	620	750	565	682	QST30G1	940	1135	850	1030	207	140×165	V-12	4300×1500×2100	7000	4700×2000
DJG-800C	700	800	640	727	QSK23G3	1030	1200	935	1085	219	140×165	V-12	4300×1500×2100	7200	4700×2000
DJG-900C	800	900	725	818	QST30G3	1200	1350	1080	1220	224	140×165	V-12	4400×1500×2100	7500	4800×2000
DJG-1000C	880	1000	800	900	QST30G4/G5	1300	1490	1180	1350	262	140x165	V-12	4400×1500×2100	7800	4800×2000
DJG-1250C	1120	1250	1005	1120	KTA50G3	1645	1850	1470	1635	330	159×159	V-16	5300×1800×2250	10300	5700×2300
DJG-1500C	1290	1500	1100	1250	KTA50G3	1915	2220	1608	1855	392	159×159	V-16	5900×2050×2800	12100	6300×2500
DJG-1750C	1500	1750	1350	1600	QSK60G3/G6	2399	2922	2165	2647	443	159×159	V-16	6251×2800×3175	16300	6800×3100
DJG-2000C	1800	2000	1600	1825	QSK60G4/G6	2567	2922	2319	2647	510	159×159	V-16	6251×2800×3175	16300	6800×3100
DJG-2250C	2000	2250	-	-	QSK60G8/G9	2875	2151	-	-	569	159×159	V-18	-	-	-
DJG-2500C	-	2500	-	2335	QSK78G6	-	3740	-	3371	644	170x190	V-18	-	-	-
DJG-2660C	2660	-	2400	-	QSK78G8	3740	-	3371	-	662	170x190	V-18	-	-	-

### • Variety of selectable engines

According to the preference of customers, we provide various products manufactured by the world's most famous brands.

**DOOSAN / Mitsubishi / CUMMINS / HYUNDAI etc**

### •Heavy-duty Battery Recharger

When recharging batteries, the voltage of the battery can be seen, and by making the recharge capacity larger, the time was shortened.

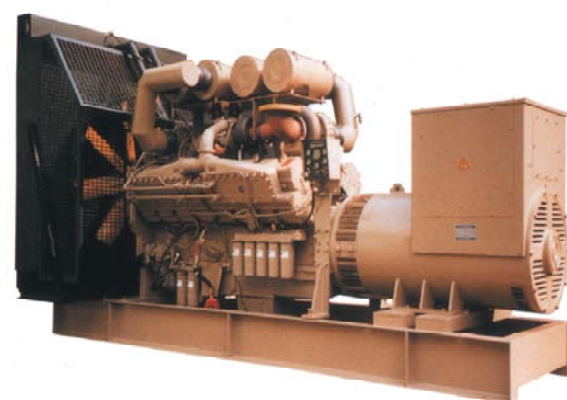
**20~600kW : 5A , 600kW~ : 10A**

### •Convenient Service Fuel Tank

To prevent rusting in the tank, anticorrosive paint was painted to protect the engine, and the amount of fuel can be easily check by the fuel level.

### •Large Capacity Embarked Fuel Tank

The embark capacity was maximized, so that it could be used for more than 4 hours.



•All information is intended for general purpose only. The data given in this table are subject to change without notice.

•Producing with ISO 9001 and ISO 14001 standards