

1. Engine Generator

Diesel Engine / Control Panel

01

Item



Generator

02

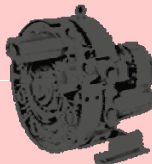
Item



Engine

03

Item



**Ring
Blower**

04

Item



Vibrator

05

Item



**Welding
Generator**

06

Item



**Construction
Equipment**

Characteristics of Diesel Engine Generator



■ Variety of selectable engines

According to the preference of customers, we provide various products manufactured by the world's most famous brands.

Hyundai / DOOSAN / VOLVO / MTU / MAN / CUMMINS / PERKINS / CATERPILLAR etc

■ Heavy-duty Battery Recharger

When recharging batteries, the voltage of the battery can be seen, and by making the recharge capacity larger, the time was shortened.

20~600kW : 5A , over 600kW : 10A

■ Silencer which minimized the noise

As an expanding silencer, it has good duration and by using silencing substances on the insides, insulation and silencing is maximized.

Silencing rate: 25dB(A)

■ Convenient Service Fuel Tank

To prevent rusting in the tank, anticorrosive paint was painted to protect the engine, and the amount of fuel can be easily check by the fuel level.

■ Large Capacity Embarked Fuel Tank

The embark capacity was maximized, so that it could be used for more than 4 hours.

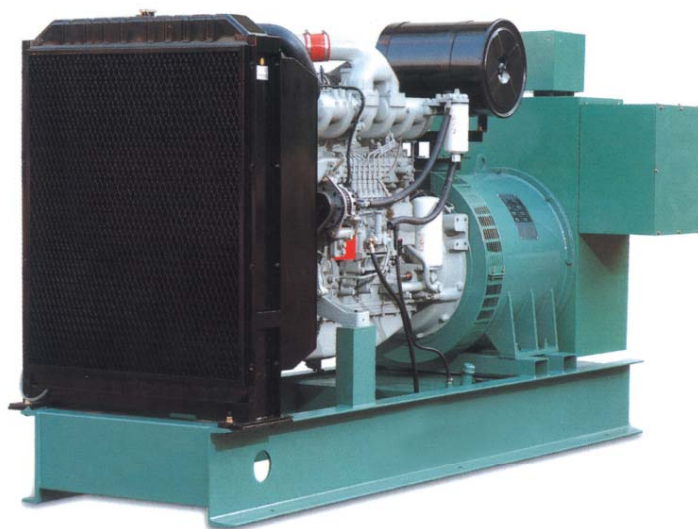
3Phase AC Synchronous Generator

Daijeon 3 phase AC synchronous alternator is state-of-art product manufactured with top quality materials and designed with advanced technology and abundant technical expertise and experiences, featuring excellent electro-mechanical characteristics, easy installation and maintenance.



- Brushless "H" class insulation compact size and long life
- Highly Responsive exciter supplies stable power under sudden load fluctuations
- Excellent electrical characteristics and solid structure with salient pole type rotor
- Mounted type exciter allows easy maintenance
- Convenient output terminals
- Low vibration and low noise

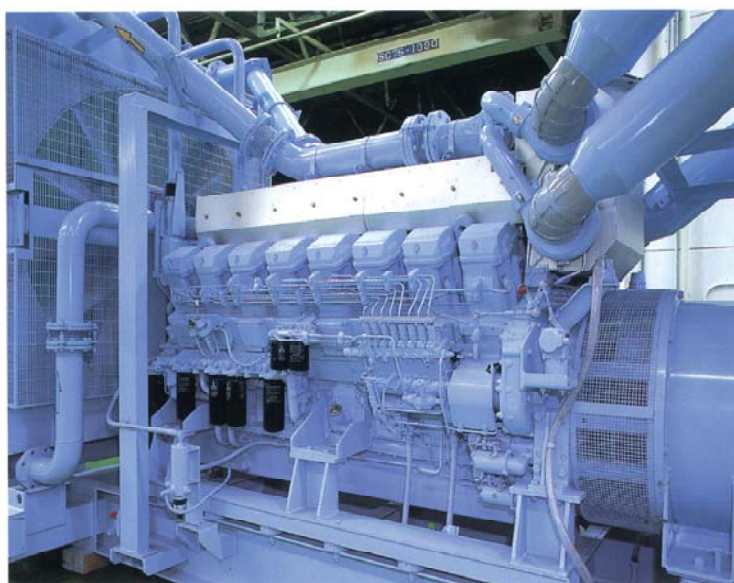
Specification



※ Ratings: 20KW~750KW, Voltages: 120V~6600V, Frequency: 60/50Hz, Revolution: 1800/1500 Rpm, Power Factor: 0.8

GENERATOR SET					DOOSAN ENGINE								GEN SET PHYSICAL DATA		
MODEL	STANDBY		PRIME		MODEL	STANDBY		PRIME		FUEL CON- SUMPTION (L/H)(PRIME)	BORE & STROKE (mm)	NO.OF CYLINDER	DIMEMSION L×W×H(mm)	WEIGHT (KG)	PAD SIZE L×W(mm)
	(KW)		(KW)			(PS)		(PS)							
	50Hz	60Hz	50Hz	60Hz		50Hz	60Hz	50Hz	60Hz						
DJG-26D	24	26	21	24	DB33	39	47	35	43	9.2	102×100	I-4	1890×750×1460	850	2300×1100
DJG-50D	41	50	36	45	P034TI	65	82	57	75	15.6	102×100	I-4	2035×750×1460	1070	2400×1100
DJG-60D	50	60	46	55	DB58	80	96	73	87	18.1	102×118	I-6	2290×850×1460	1300	2700×1300
DJG-90D	75	90	68	82	D1146	116	143	105	130	26.6	111×139	I-6	2500×850×1460	1800	2900×1300
DJG-130D	104	130	94	118	D1146T	160	202	145	170	35.9	111×139	I-6	2600×900×1460	1900	2900×1300
DJG-200D	178	200	158	182	P086TI	270	303	240	279	56.8	111×139	I-6	2728×850×1650	2250	3200×1400
DJG-250D	227	250	201	227	P126TI-III	343	375	304	343	68.2	123×155	I-6	2994×920×1600	2400	3500×1400
DJG-275D	249	275	221	250	P126TI	370	405	328	378	76.5	123×155	I-6	2994×920×1600	2500	3500×1400
DJG-300D	266	300	241	273	P126TI- II	395	465	358	418	89.5	123×155	I-6	2994×920×1600	2600	3500×1400
DJG-320D	292	320	291	291	P158LE- II	437	491	399	447	93.5	128×142	V-8	2990×1150×1900	3200	3500×1800
DJG-360D	329	360	297	327	P158LE- I	492	546	444	498	104	128×142	V-8	2990×1150×1900	3300	3500×1800
DJG-400D	378	400	332	364	P158LE	563	602	494	547	115.7	128×142	V-8	2990×1150×1900	3400	3500×1800
DJG-450D	-	450	-	409	P158LE-III	-	625	-	690	129.6	128×142	V-8	3170×1150×1900	3500	3700×1800
DJG-500D	455	500	406	445	P180LE	674	734	602	676	144.6	128×142	V-10	3170×1150×1900	3600	3700×1800
DJG-520D	455	520	415	473	P180LE-S	674	771	615	705	138.1	128×142	V-10	3170×1150×1900	3600	3700×1800
DJG-550D	-	550	-	500	P180LE- II	-	850	-	765	155.6	128×142	V-12	3600×1400×1900	3900	4000×1800
DJG-610D	527	610	651	555	P222LE	781	898	723	803	173.5	128×142	V-12	3390×1150×1900	4100	4000×1800
DJG-630D	554	630	506	573	P222LE-S	820	927	750	850	166.1	128×142	V-12	3390×1150×1900	4200	4100×1800
DJG-660D	598	660	-	600	P222LE- II	886	1000	-	906	192.1	128×142	V-12	3390×1150×1900	4200	4100×1800
DJG-750D	-	750	-	682	P222FE- II	-	1115	-	998	201.6	128×142	V-12	3390×1150×1900	4200	4100×1800

The data given in this table are subject to change without notice.

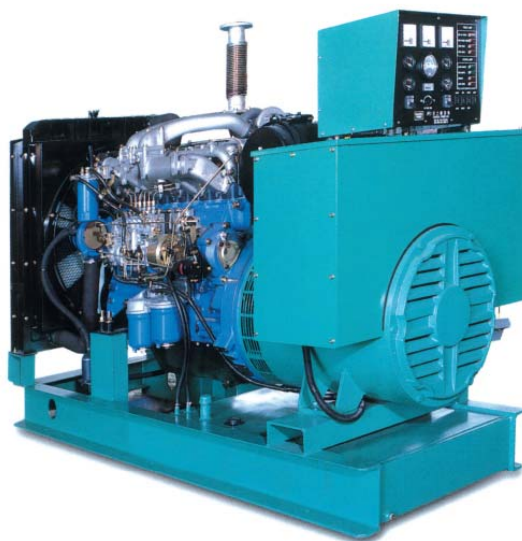


※ Ratings: 600KW~2000KW, Voltages: 120V~6600V, Frequency: 60/50Hz, Revolution: 1800/1500 Rpm, Power Factor: 0.8

GENERATOR SET					MITSUBISHI ENGINE							GEN SET PHYSICAL DATA			
MODEL	STANDBY		PRIME		MODEL	STANDBY		PRIME		FUEL CON-	BORE &	NO.OF	DIMENSION L×W×H(mm)	WEIGHT	PAD SIZE
	(KW)		(KW)			(HP)		(HP)		SUMPTION	STROKE	CYLINDER			L×W(mm)
	50Hz	60Hz	50Hz	60Hz		50Hz	60Hz	50Hz	60Hz	(L/H)(PRIME)	(mm)				
DJG-600MI	520	600	470	545	S6R-PTA	744	865	670	771	150	170×180	I-16	3400×1500×2000	5350	3800×2000
DJG-800MI	680	800	617	725	S12A2-PTA	970	1146	880	980	212.2	150×160	V-12	3800×1700×2100	6420	4200×2100
DJG-1000MI	921	1000	836	909	S12H-PTA	1314	1448	1193	1314	256	150×175	V-12	4000×1800×2400	8100	4400×2200
DJG-1250MI	1124	1250	1020	1135	S12R-PTA	1595	1791	1448	1528	314.7	170×180	V-12	4700×2300×2900	10830	5100×2700
DJG-1350MI	1280	1350	1160	1225	S12R-PTA2	-	1903	-	1729	331	170×180	V-12	4935×2300×2900	10830	5400×2700
DJG-1500MI	1336	1500	1220	1350	S12R-PTAA2	-	2139	-	1940	358	170×180	V-12	5080×2300×2900	13000	5400×2700
DJG-1600MI	1510	1600	1413	1450	S16R-PTA	2131	2279	1994	2067	408.9	170×180	V-16	5600×2750×3000	13000	6000×3100
DJG-1750MI	1689	1750	1536	1590	S16R-PTA2	2359	2547	2145	2312	473.8	170×180	V-16	6000×2750×3000	14000	6400×3100
DJG-2000MI	1818	2000	1616	1818	S12R-PTAA2	2540	2822	2250	2540	504.4	170×180	V-16	6000×2750×3500	15900	6400×3100

The data given in this table are subject to change without notice.

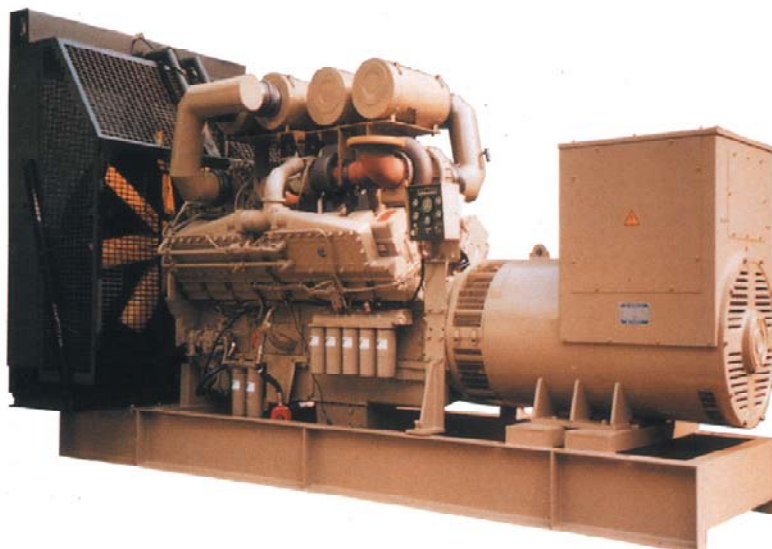
Specification



※ Ratings: 20KW~320KW, Voltages: 120V~6600V, Frequency: 60/50Hz, Revolution: 1800/1500 Rpm, Power Factor: 0.8

GENERATOR SET					HYUNDAI ENGINE								GEN SET PHYSICAL DATA		
MODEL	STANDBY (KW)		PRIME (KW)		MODEL	STANDBY (PS)		PRIME (PS)		FUEL CON-SUMPTION (L/H)(PRIME)	BORE & STROKE (mm)	NO.OF CYLINDER	DIMEMSION L×W×H(mm)	WEIGHT	PAD SIZE W×L(mm)
	50Hz	60Hz	50Hz	60Hz		50Hz	60Hz	50Hz	60Hz						
DJG-40H	34	40	30	37	D4AF-G	50	60	45	54	12	104×105	I-4	1800×800×1200	900	2100×1100
DJG-55H	42	55	38	50	D4AK-G	60	82	54	74	15.6	100×105	I-4	1800×800×1200	1000	2100×1100
DJG-80H	63	80	57	73	D6BR-G1	110	130	99	117	27.4	118×115	I-6	2300×910×1400	1400	2600×1300
DJG-115H	97	115	89	105	D6BT-G1	155	180	140	162	43.5	118×115	I-6	2500×910×1400	1800	2900×1300
DJG-150H	138	150	124	135	D6AZ-G2	230	250	207	225	46	130×140	I-6	2700×910×1500	2100	3000×1400
DJG-185H	162	185	146	167	D6AZ-G1	270	309	243	278	58.7	130×140	I-6	2700×910×1500	2200	3000×1400
DJG-230H	195	230	177	210	D6AC-G1	320	350	288	315	64.3	130×140	I-6	2700×910×1500	2400	3000×1400
DJG-275H	230	275	210	250	D6CA-G3	334	410	327	400	73	104×105	I-6	2900×1100×1600	2900	3200×1500
DJG-300H	245	300	220	272	D6CA-G2	400	450	352	430	81	104×105	I-6	2900×1100×1600	2900	3200×1500
DJG-320H	260	320	236	288	D6CA-G1	400	490	360	440	89	104×105	I-6	2900×1100×1600	2900	3200×1500

The data given in this table are subject to change without notice.



※ Ratings: 450KW~2600KW, Voltages: 120V~6600V, Frequency: 60/50Hz, Revolution: 1800/1500 Rpm, Power Factor: 0.8

GENERATOR SET					Cummins ENGINE					GEN SET PHYSICAL DATA					
MODEL	STANDBY		PRIME		MODEL	STANDBY		PRIME		FUEL CON-SUMPTION (L/H)(PRIME)	BORE & STROKE (mm)	NO.OF CYLINDER	DIMEMSION L×W×H(mm)	WEIGHT	PADSIZE L×W(mm)
	(KW)		(KW)			(HP)		(HP)							
	50Hz	60Hz	50Hz	60Hz		50Hz	60Hz	50Hz	60Hz						
DJG-450C	400	450	364	410	QSX15G8/G9	670	755	595	680	103	137x169	I-6	3500×1300×2000	4450	4000×1800
DJG-500C	440	500	400	455	QSX15G8/G9	670	755	595	680	103	137x169	I-6	3500×1300×2000	4600	4000×1800
DJG-600C	565	600	512	545	VTA28G5	825	900	750	815	173	140×165	V-12	4100×1500×2000	6050	4400×2000
DJG-750C	620	750	565	682	QST30G1	940	1135	850	1030	207	140×165	V-12	4300×1500×2100	7000	4700×2000
DJG-800C	700	800	640	727	QSK23G3	1030	1200	935	1085	219	140×165	V-12	4300×1500×2100	7200	4700×2000
DJG-900C	800	900	725	818	QST30G3	1200	1350	1080	1220	224	140×165	V-12	4400×1500×2100	7500	4800×2000
DJG-1000C	880	1000	800	900	QST30G4/G5	1300	1490	1180	1350	262	140x165	V-12	4400×1500×2100	7800	4800×2000
DJG-1250C	1120	1250	1005	1120	KTA50G3	1645	1850	1470	1635	330	159×159	V-16	5300×1800×2250	10300	5700×2300
DJG-1500C	1290	1500	1100	1250	KTA50G3	1915	2220	1608	1855	392	159×159	V-16	5900×2050×2800	12100	6300×2500
DJG-1750C	1500	1750	1350	1600	QSK60G3/G6	2399	2922	2165	2647	443	159×159	V-16	6251×2800×3175	16300	6800×3100
DJG-2000C	1800	2000	1600	1825	QSK60G4/G6	2567	2922	2319	2647	510	159×159	V-16	6251×2800×3175	16300	6800×3100
DJG-2250C	2000	2250	-	-	QSK60G8/G9	2875	2151	-	-	569	159×159	V-18	-	-	-
DJG-2500C	-	2500	-	2335	QSK78G6	-	3740	-	3371	644	170x190	V-18	-	-	-
DJG-2660C	2660	-	2400	-	QSK78G8	3740	-	3371	-	662	170x190	V-18	-	-	-

The data given in this table are subject to change without notice.

Specification



※ Ratings: 230KW~2250KW, Voltages: 120V~6600V, Frequency: 60/50Hz, Revolution: 1800/1500 Rpm, Power Factor: 0.8

GENERATOR SET				CATERPILLAR ENGINE								GEN SET PHYSICAL DATA			
MODEL	STANDBY (KW)		PRIME (KW)		MODEL	STANDBY (BHP)		PRIME (BHP)		FUEL CON-SUMPTION (L/H)(PRIME)	BORE & STROKE (mm)	NO.OF CYLINDER	DIMENSION L×W×H(mm)	WEIGHT	PAD SIZE L×W(mm)
	50Hz	60Hz	50Hz	60Hz		50Hz	60Hz	50Hz	60Hz						
DJG-230CA	200	230	180	210	3306TA	300	345	270	314	67	137×152	I-6	3800×1100×1950	3100	4100×1500
DJG-250CA	220	250	200	225	3306ATAAC	330	377	300	343	72.3	137×152	I-6	3800×1100×1850	3200	4100×1500
DJG-300CA	-	300	-	275	3456EATAAC	-	471	-	431	75	140×171	I-6	4200×1175×2170	4800	4800×1800
DJG-350CA	-	350	-	320	3456EATAAC	-	536	-	493	90	140×171	I-6	4200×1175×2170	4800	4800×1800
DJG-400CA	-	400	-	365	3456EATAAC	-	610	-	546	100	140×171	I-6	4200×1175×2170	4800	4800×1800
DJG-450CA	-	450	-	410	3456EATAAC	-	685	-	612	111	140×171	I-6	4200×1175×2170	4800	4800×1800
DJG-500CA	-	500	-	455	3456EATAAC	-	764	-	691	124	140×171	I-6	4200×1175×2170	4800	4800×1800
DJG-550CA	440	550	400	500	3412TTA	649	823	590	752	154	137×152	V-12	4500×1750×2000	6200	4900×2200
DJG-600CA	520	600	480	545	3412TTA	774	896	715	817	168	137×152	V-12	4500×1750×2000	6300	4900×2200
DJG-650CA	560	650	508	591	3412TTA	822	968	748	890	175	137×152	V-12	4650×1750×2000	6400	5000×2200
DJG-700CA	600	700	544	635	3412TTA	878	1039	799	947	188	137×152	V-12	4500×1750×2000	7000	4900×2200
DJG-750CA	640	750	580	680	3412STA	935	1109	849	1011	206	137×152	V-12	4500×1750×2000	7100	4900×2200
DJG-800CA	720	800	648	725	3412STA	1051	1180	949	1071	222	137×152	V-12	4500×1750×2000	7200	4900×2200
DJG-900CA	800	900	728	820	3508TA	1167	1337	1078	1220	251	170×190	V-8	4650×2050×2250	9500	5000×2500
DJG-1000CA	880	1000	800	910	3508BTA	1297	1482	1180	1380	277	170×190	V-8	4900×2350×2550	11000	5300×2900
DJG-1100CA	1000	1100	920	1000	3512TA	1444	1592	1348	1443	282	170×190	V-12	5150×2050×2550	12000	5600×2600
DJG-1250CA	1120	1250	1020	1135	3512TA	1605	1801	1458	1661	355	170×190	V-12	5200×2350×2550	13000	5600×2900
DJG-1400CA	1200	1400	1088	1275	3512BTA	1737	2018	1556	1840	383	170×190	V-12	5200×2350×2550	13000	5600×2900
DJG-1500CA	1280	1500	1200	1360	3512BTA	1851	2168	1749	1967	411	170×190	V-12	5200×2350×2550	13000	5600×2900
DJG-1750CA	1600	1750	1460	1600	3516TA	2293	2518	2095	2304	470	170×190	V-16	5700×2350×2550	15000	6100×2900
DJG-2000CA	1800	2000	1600	1825	3516BTA	2595	2876	2293	2628	519	170×190	V-16	5800×2550×2550	15000	6400×3000
DJG-2250CA	2000	2250	1820	2000	3516BTA	2876	3210	2622	2876	589	170×190	V-16	6600×2650×3000	17000	7200×3100

The data given in this table are subject to change without notice.

Characteristics of Diesel Engine Generator

General	
Applied Specification	<ul style="list-style-type: none"> •Korean Standard(KS) •Korea Electronic Manufacturing Coop (KEMC-1111) •Japanese Electronic Manufacturing(JEM-1354) •German Industrial Standards (DIN-6720)
Operating Condition	<ul style="list-style-type: none"> •Surrounding temp : Min. -15~Max. 40 •Altitude : under 1,000m above sea level •Humidity : Indoors (Machine room temp 5~40℃)
Rated Output	<ul style="list-style-type: none"> •Generator output standard date •Stand By : 1 out of 12 hours of continuous use is possible, used when average output is under 90% of stand by output •Prime : As the maximum continuous output, 1 out of 12 hours can be operated with a 10% overload(DIN 6270B)
Lubrication Oil	<ul style="list-style-type: none"> •RIMULA-X 15W/40, Multigrade (Maker:SHELL) or equivalent
Fuel Oil	<ul style="list-style-type: none"> •Standard : ASTM NO.2 DIESEL OIL •Recommended : Domestically distributed Low-Sulfur Diesel
Painting Color	<ul style="list-style-type: none"> •Diesel Generator and accessories : Engine original color, Silencer is •Heat proof (Silver or black) •Control Panel : MUNSELL No. 5y 7/1

Diesel Engine	
Engine Type (60Hz/50Hz)	<ul style="list-style-type: none"> •High-speed engine : 1800/1500RPM
Engine Maker	<ul style="list-style-type: none"> •Doosan / MITSUBISHI/ CUMMINS / CATERPILLAR / HYUNDAI / VOLVO / MTU / PERKINS / etc

Alternator	
Rated voltage	<ul style="list-style-type: none"> •220 V, 380 V, 440 V, 3300 V, 6600 V
Revolution	<ul style="list-style-type: none"> •1800/1500
Frequency	<ul style="list-style-type: none"> •60Hz, 50Hz
Power Factor	<ul style="list-style-type: none"> •0.8 (Land-level)
Wire Connection	<ul style="list-style-type: none"> •WYE (Y)
Excitation System	<ul style="list-style-type: none"> •Self Exciting Brushless Type
Insulation Class	<ul style="list-style-type: none"> •F (H)
Voltage adjust range	<ul style="list-style-type: none"> •±5%
Cooling	<ul style="list-style-type: none"> •Automatic cooling by Fan, Water Cooling
Voltage Variation	<ul style="list-style-type: none"> •±2.5%

Characteristics of Diesel Engine Generator

Operation Control Panel Capacity(Control Panel)	
Structure	<ul style="list-style-type: none"> •Separate form, front door t 3.2 mm, back door t 2.3 mm, frame t. 2.3mm thick rolled steel type 1 is used. •The front side has the main circuit breaker, push button, lamp, switch, and gauges on it. •Both front and back doors are in the Hinge Type, and facing the door, the Handle is on the left, the hinge is on the right. •In the operation panel, a ground line(Cu, t5×25) is installed. •Control circuit is on principle, ducked circuit, and when inevitable, it is done in bundles. •It it for indoor use, and protection rate is IP40. •The conductor for main power consists of the Bus Bar, maintaining an adequate distance, and exposed parts are plated with tin.
Rated Voltage	•220V, 380V, 440V, 3300V, 6600V
Power and load connection	<ul style="list-style-type: none"> •Power Income : Connect cable under the Panel •Load Output : Connect cable under the Panel
Wiring ※Uses 600V, and the wiring capacity is as the following	<ul style="list-style-type: none"> •Gauge flow transformer' s 2nd circuit: 3.5mm² Green •Gauge voltage translator' s 2nd circuit: 2.0mm² Red •Control Wiring: Yellow •Ground Wiring : 3.5mm² Yellow+Green •Power Cable Color : Black
Name Plate	•On white plastic, black Gothic letters(English and Arabic Numbers) are printed, the size of name plates are as the company' s standards, and are fixed by a Sealer.
Wire Maker)	•On each end of wires, white vinyl tubes with black letters are fit to make it convenient to distinguish.
Annunciator	•All annunciators are set in a wide angle, and all annunciators excluding frequency and voltage have the accuracy of ±1.5%. (Hz : ±10%, PF: ±5.0%)
Power to be prepared by customer	<ul style="list-style-type: none"> •Jacket Water Heater Controlling power : AC 220V, 1Phase Etc •Main Circuit Breaker ACB or VCB controlling power : DC 110 V •When the main circuit is MCCB, MCCB controlling power : DC 24V(No need when electric starting type)



Features of Daijeon Generator Control Panel

- **Microprocessor with employment high reliability**
- **Flexible design for various application needs**
- **Flawless protection and reliability based upon annunciation system**
- **Accurate metering and instruments**
- **Terminals and operation methods for easier inspection**
- **Magnificent external appearance and easy parts replacements**
- **Stable power supply in every environments**
- **Complete and quick sales services**

Control Panel – Mounted Type



Mounted Control Panel

Engine Speed-	RPM	Running Hours
Lube Oil Pressure-	kg/cm ²	Fault Indicator
Water Temperature-	°C	VS/AS
Voltmeter-	Vac	Starting Switch
Ammeter-	A	Volt Adjusting Switch
Frequency meter-	Hz	Emergency Stop Button
Battery Voltmeter-	Vdc	(ECU) Engine Control Unit
Battery Ammeter-	Adc	Size : 500x330x300

Standard Protection

Protection items	Warning light	Warning sound	CB Stopper	Engine stop
Operation Failure	<input type="radio"/>	<input type="radio"/>	<input type="radio"/>	<input type="radio"/>
Over speed	<input type="radio"/>	<input type="radio"/>	<input type="radio"/>	<input type="radio"/>
Coolant overheat	<input type="radio"/>	<input type="radio"/>	<input type="radio"/>	<input type="radio"/>
Lubrication low pressure	<input type="radio"/>	<input type="radio"/>	<input type="radio"/>	<input type="radio"/>
Emergency stop	<input type="radio"/>	<input type="radio"/>	<input type="radio"/>	<input type="radio"/>
Over voltage	<input type="radio"/>	<input type="radio"/>	<input type="radio"/>	<input type="radio"/>
Over flow	<input type="radio"/>	<input type="radio"/>	<input type="radio"/>	<input checked="" type="checkbox"/>
Low voltage	<input type="radio"/>	<input type="radio"/>	<input type="radio"/>	<input checked="" type="checkbox"/>

Control Panel – Floor Standing Type



Floor-Standing Control Panel

Wattmeter -	KW	Running Hours
Voltmeter -	Vac	Fault Indicator
Ammeter -	A	VS/AS
Frequency meter -	Hz	Starting Switch
Power Factor meter-	PF	Volt Adjusting Switch
Battery Voltmeter-	Vdc	Emergency Stop Button
Battery Ammeter-	Adc	(ECU) Engine Control Unit
EOVR		Battery Charger
EOCR		(ACB) Air Circuit Breaker
EUVR		Size : 800x1,200x2,000

Standard Protection

Protection items	Warning light	Warning sound	CB Stopper	Engine stop
Operation Failure	<input type="radio"/>	<input type="radio"/>	<input type="radio"/>	<input type="radio"/>
Over speed	<input type="radio"/>	<input type="radio"/>	<input type="radio"/>	<input type="radio"/>
Coolant overheat	<input type="radio"/>	<input type="radio"/>	<input type="radio"/>	<input type="radio"/>
Lubrication low pressure	<input type="radio"/>	<input type="radio"/>	<input type="radio"/>	<input type="radio"/>
Emergency stop	<input type="radio"/>	<input type="radio"/>	<input type="radio"/>	<input type="radio"/>
Over voltage	<input type="radio"/>	<input type="radio"/>	<input type="radio"/>	<input type="radio"/>
Over flow	<input type="radio"/>	<input type="radio"/>	<input type="radio"/>	X
Low voltage	<input type="radio"/>	<input type="radio"/>	<input type="radio"/>	X



DAIJEON Machinery

**345-43 Gasan-dong Keumcheon-gu,
Seoul, S.Korea**

TEL: +82-2-923-6801~3, FAX: +82-2-922-5413

**E-mail : hkkim@daijeonsa.co.kr
H.P. : <http://www.daijeonsa.co.kr>**