



Great Creators

## DVT Vibrator

2, 4, 6, 8 Pole

01  
Item



Generator

02  
Item



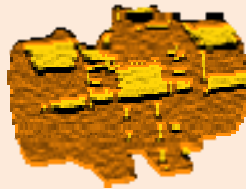
Engine

03  
Item



Ring  
Blower

04  
Item



Vibrator

05  
Item



Welding  
Generator

06  
Item



Construction  
Equipment

Catalogue Item Number: I -4-1

# DVT Series

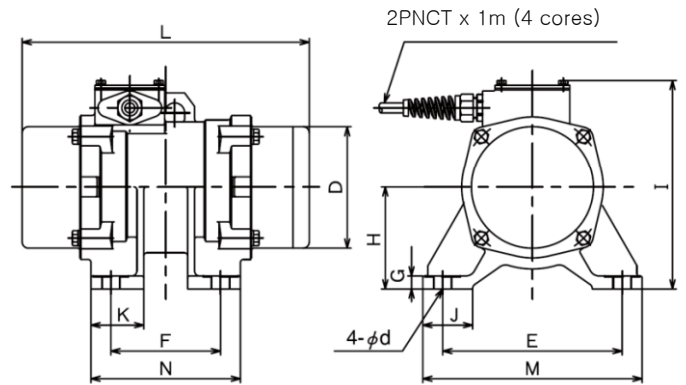
## Introduction



We thank you for your selection of our Daijeon Vibrator. This is a rotary type electric vibrator which produces vibrations by means of centrifugal force of the rotating unbalance weights mounted at both ends of the rotor shaft.

| Specification                | Three Phase         |           |           |          | Single Phase |
|------------------------------|---------------------|-----------|-----------|----------|--------------|
|                              | 2Pole               | 4Pole     | 6Pole     | 8Pole    | 2Pole        |
| Power Supply(V)              | 220V /380V          |           |           |          | 220V         |
| Output (kw)                  | 0.1~2.2             | 0.2~2.2   | 0.4~2.2   | 0.4~2.2  | 0.1kw        |
| Rotation Speed 50/60Hz (rpm) | 3000/3600           | 1500/1800 | 1000/1200 | 750/900  | 3000/3600    |
| Vibrating Force (kgf)        | 100~3000            | 600~5200  | 500~3400  | 500~3000 | 100          |
| Accessory Cable              | 2PNTC(4 cores) x 1m |           |           |          |              |

## 2 pole, 220V/380V, Single/Three Phase

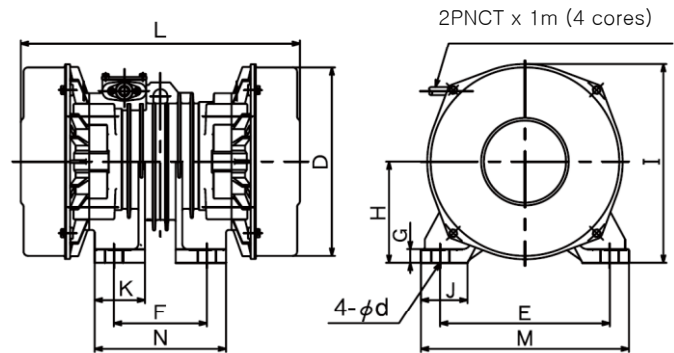


| Model                   | Force (kgf) | Output (kw) | Full load current (A) 50/60Hz | Weight (kg) | Dimension (mm) |     |     |    |     |     |    |    |     |     |     |    |     |
|-------------------------|-------------|-------------|-------------------------------|-------------|----------------|-----|-----|----|-----|-----|----|----|-----|-----|-----|----|-----|
|                         |             |             |                               |             | D              | E   | F   | G  | H   | I   | J  | K  | L   | M   | N   | d  | Φ   |
| DVT - 201 <sup>1)</sup> | 100         | 0.1         | 0.25/0.3                      | 7           | 90             | 120 | 40  | 13 | 56  | 140 | 40 | -  | 205 | 150 | 67  | 10 | M8  |
| DVT - 202               | 350         | 0.2         | 0.6/0.7                       | 15          | 110            | 150 | 90  | 17 | 71  | 170 | 40 | 45 | 260 | 184 | 122 | 14 | M12 |
| DVT - 204               | 600         | 0.4         | 0.9/1.0                       | 24          | 125            | 190 | 110 | 18 | 84  | 210 | 50 | 55 | 300 | 230 | 150 | 18 | M16 |
| DVT - 208               | 1,000       | 0.75        | 1.5/1.7                       | 36          | 165            | 220 | 120 | 18 | 92  | 225 | 60 | 65 | 359 | 275 | 170 | 22 | M20 |
| DVT - 215               | 1,600       | 1.5         | 3.2/3.5                       | 52          | 166            | 240 | 140 | 25 | 130 | 264 | 70 | 75 | 438 | 300 | 200 | 26 | M24 |
| DVT - 222               | 3,000       | 2.2         | 8.2/8.1                       | 98          | 225            | 310 | 170 | 28 | 158 | 320 | 85 | 95 | 500 | 380 | 240 | 33 | M30 |

1) Single or Three Phase

\* The data given in this table are subject to change without notice.

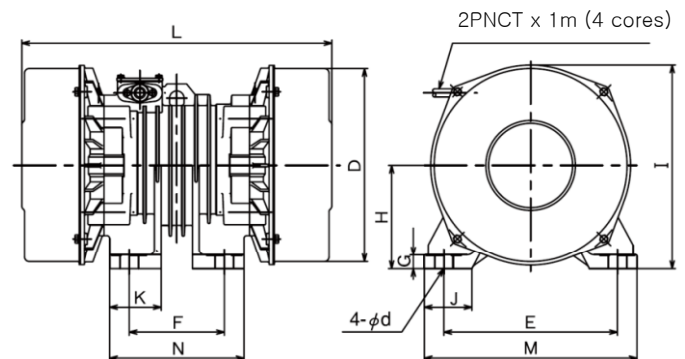
## 4 pole, 220V/380V, Three Phase



| Model     | Force (kgf) | Output (kw) | Full load current (A) 50/60Hz | Weight (kg) | Dimension (mm) |     |     |    |     |     |     |     |     |     |     |    |     |
|-----------|-------------|-------------|-------------------------------|-------------|----------------|-----|-----|----|-----|-----|-----|-----|-----|-----|-----|----|-----|
|           |             |             |                               |             | D              | E   | F   | G  | H   | I   | J   | K   | L   | M   | N   | d  | Φ   |
| DVT - 402 | 600         | 0.2         | 0.8/0.9                       | 25          | 170            | 160 | 100 | 15 | 92  | 195 | 40  | 45  | 300 | 195 | 130 | 14 | M12 |
| DVT - 404 | 900         | 0.4         | 1.2/1.4                       | 35          | 190            | 190 | 110 | 17 | 102 | 210 | 50  | 55  | 340 | 230 | 150 | 18 | M16 |
| DVT - 408 | 1,200       | 0.75        | 2.0/2.2                       | 54          | 225            | 220 | 140 | 20 | 120 | 240 | 60  | 65  | 410 | 270 | 190 | 22 | M20 |
| DVT - 411 | 1,700       | 0.85        | 2.8/3.0                       | 72          | 245            | 240 | 140 | 22 | 130 | 260 | 70  | 75  | 430 | 300 | 200 | 26 | M24 |
| DVT - 415 | 3,400       | 1.5         | 5.8/6.0                       | 122         | 295            | 310 | 170 | 25 | 158 | 320 | 85  | 95  | 525 | 380 | 240 | 33 | M30 |
| DVT - 422 | 5,200       | 2.2         | 9.0/10.0                      | 180         | 345            | 350 | 220 | 30 | 185 | 365 | 100 | 110 | 585 | 430 | 300 | 39 | M36 |

\* The data given in this table are subject to change without notice.

## 6&8 pole, 220V/380V, Three Phase

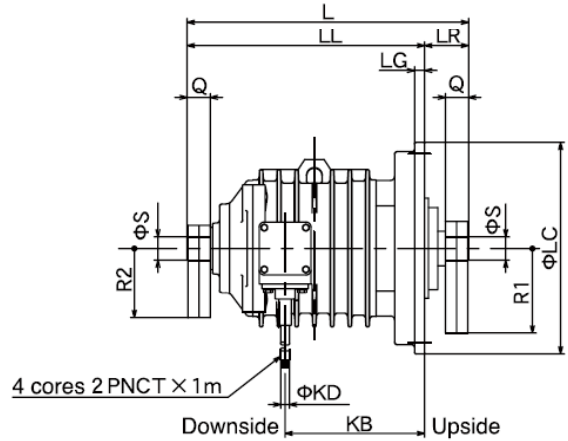
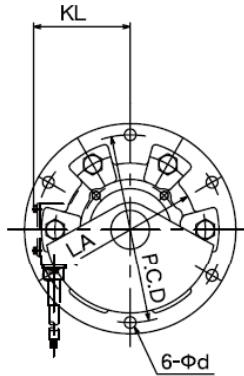


| Pole | Model     | Force (kgf) | Output (kw) | Full load current (A) 50/60Hz | Weight (kg) | Dimension (mm) |     |     |    |     |     |     |     |     |     |     |    |     |
|------|-----------|-------------|-------------|-------------------------------|-------------|----------------|-----|-----|----|-----|-----|-----|-----|-----|-----|-----|----|-----|
|      |           |             |             |                               |             | D              | E   | F   | G  | H   | I   | J   | K   | L   | M   | N   | d  | Φ   |
| 6    | DVT - 604 | 500         | 0.4         | 1.7/1.9                       | 36          | 190            | 190 | 110 | 13 | 104 | 210 | 50  | 55  | 365 | 220 | 150 | 18 | M16 |
|      | DVT - 608 | 900         | 0.6         | 2.6/2.8                       | 54          | 225            | 220 | 140 | 20 | 120 | 240 | 60  | 65  | 410 | 270 | 190 | 22 | M20 |
|      | DVT - 611 | 1,300       | 0.85        | 2.8/3.0                       | 71          | 245            | 240 | 140 | 22 | 130 | 260 | 70  | 75  | 440 | 300 | 200 | 26 | M24 |
|      | DVT - 615 | 2,400       | 1.5         | 5.7/6.0                       | 134         | 295            | 310 | 170 | 25 | 158 | 320 | 85  | 95  | 550 | 380 | 240 | 33 | M30 |
|      | DVT - 622 | 3,400       | 2.2         | 8.0/9.0                       | 181         | 345            | 350 | 220 | 35 | 185 | 365 | 100 | 110 | 550 | 430 | 300 | 39 | M36 |
| 8    | DVT - 804 | 500         | 0.4         | 3.2/2.7                       | 52          | 225            | 220 | 140 | 16 | 120 | 240 | 60  | 65  | 410 | 270 | 190 | 22 | M20 |
|      | DVT - 806 | 730         | 0.6         | 4.2/3.7                       | 67          | 245            | 240 | 140 | 20 | 130 | 260 | 70  | 75  | 440 | 300 | 200 | 26 | M24 |
|      | DVT - 808 | 1,000       | 0.75        | 5.9/5.1                       | 90          | 265            | 260 | 150 | 22 | 142 | 280 | 70  | 80  | 500 | 320 | 210 | 26 | M24 |
|      | DVT - 815 | 2,000       | 1.5         | 9.4/8.2                       | 153         | 295            | 310 | 170 | 25 | 158 | 320 | 85  | 95  | 610 | 380 | 240 | 33 | M30 |
|      | DVT - 822 | 3,000       | 2.2         | 12/11                         | 226         | 345            | 350 | 220 | 30 | 185 | 365 | 100 | 110 | 710 | 430 | 300 | 39 | M36 |

\* The data given in this table are subject to change without notice.

# DVT Series

Vertical Type - 4&6 pole, 220V/380V, Three Phase

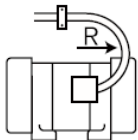


| Pole | Model     | Output (kw) | Full load current (A) 50/60Hz | Vibrating force 50/60Hz |           |         |                     |           |        | Weight (kg) | Dimension (mm) |     |     |     |    |     |    |     |      |     |    |    |    |           |
|------|-----------|-------------|-------------------------------|-------------------------|-----------|---------|---------------------|-----------|--------|-------------|----------------|-----|-----|-----|----|-----|----|-----|------|-----|----|----|----|-----------|
|      |           |             |                               | Flange side             |           |         | Counter flange side |           |        |             | L              | PCD | LA  | LC  | LG | LL  | LR | KB  | KD   | KL  | Q  | S  | D  | Bolt Data |
|      |           |             |                               | Moment kg-cm            | Force kgf | Radius  | Moment kg-cm        | Force kgf | Radius |             |                |     |     |     |    |     |    |     |      |     |    |    |    |           |
| 4    | DVT -408V | 0.75        | 2.0/2.2                       | 42.0/29.0               | 800       | 130/116 | 21.0/14.5           | 500       | 104/92 | 52          | 395            | 215 | 172 | 245 | 13 | 329 | 66 | 181 | 11.5 | 127 | 39 | 38 | 14 | M12       |
|      | DVT -415V | 1.5         | 5.0/6.0                       | 57.0/40.0               | 1,100     | 137/122 | 27.4/19.0           | 650       | 108/96 | 70          | 406            | 260 | 172 | 295 | 13 | 332 | 74 | 193 | 11.5 | 140 | 45 | 42 | 18 | M16       |
| 6    | DVT -608V | 0.75        | 2.8/3.0                       | 42.0/29.0               | 800       | 130/116 | 21.0/14.5           | 500       | 104/92 | 52          | 395            | 215 | 172 | 245 | 13 | 329 | 66 | 181 | 11.5 | 127 | 39 | 38 | 14 | M12       |
|      | DVT -615V | 1.5         | 5.8/6.0                       | 57.0/40.0               | 1,100     | 137/122 | 27.4/19.0           | 650       | 108/96 | 70          | 406            | 260 | 172 | 295 | 13 | 332 | 74 | 193 | 11.5 | 140 | 45 | 42 | 18 | M16       |

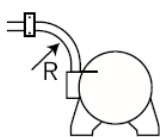
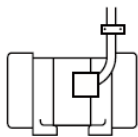
\* The data given in this table are subject to change without notice.

## Lead Connection

Best



Good



1) Side view along the axis

2) Side view at a ring angle

To ensure safe operation, use the lead cable sizes shown in the table and connect them as shown in the diagram on the left.

## DAIJEON Machinery

345-43 Gasan-dong Keumcheon-gu, Seoul, S.Korea

TEL: +82-2-923-6801~3, FAX: +82-2-922-5413

E-mail : hkkim@daijeonsa.co.kr

H.P. : <http://www.daijeonsa.co.kr>